



**Xtend<sup>3</sup>** *Multi-touch technology*

**The smart system**  
for gluing control and quality assurance.  
Networked and intelligent!

# See and be seen – The Xtend<sup>3</sup> system knows your production and secures your quality.



## Operation

- 21.5", 16:9 touch screen
- Multi-touch technology
- Smart user prompting

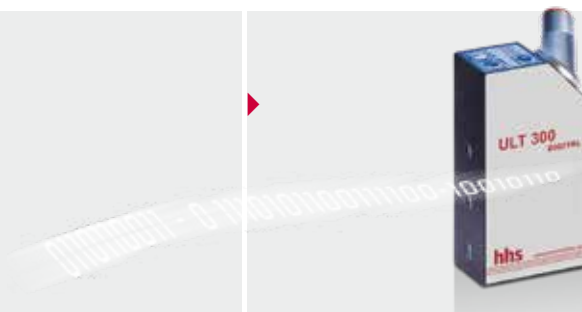


## Xmelt connection

- InterActive information on all connected components
- Central operation of hot and cold gluing equipment; display and operation of all hot glue parameters

## InterActive

- All Baumer hhs sensors are recognised by Xtend<sup>3</sup>
- Set up is effortless with monitoring of the service life and maintenance cycles of the sensors
- Detection of the connected Baumer hhs components



## Access authorisation

- Non-contact user recognition by means of RFID
- Blocking of sensitive areas; you determine your security

## Production statistics

- Online display of all process data
- Usable for all common data systems; processing with standard PC software
- Use the data from Xtend<sup>3</sup> to create your own app



# Faster setup thanks to intuitive user prompting.

Xtend<sup>3</sup> is a modular system for gluing control and quality assurance.

## Glue control

- For all Baumer hhs application head series
- High-precision glue control; 8, 16, 24 and 32 channels, endlessly extendable



## Intelligent sensors

- The product is already evaluated in the sensor
- Integration of future sensor technologies is no problem

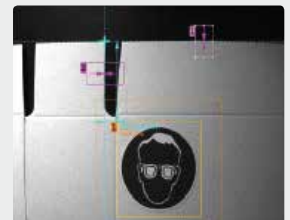
## Xcam

- Camera-monitored product data and live picture
- You see what Xtend<sup>3</sup> sees; additional visual checking by means of live picture and archive



## Fully integrated Xcam solutions

- Adhesive detection
- Object detection
- Position control
- Edge control



**Intelligent sensors and cameras leave nothing to chance and create total security from the feeder to the end customer. Concern yourself with what's essential – Xtend<sup>3</sup> keeps your machine running.**

Baumer hhs has integrated the same reliability into the entire process chain as the ultimate customer demands of you. In addition to the ejector, which discharges any defective products, sensors and cameras monitor the products in the machine in accordance with the fail-safe principle. In other words: every product is initially considered to be defective and only rated as good after successfully passing all controls. If required, the system can substantiate all events on any PC in your network by means of data processing and statistics. An integrated process resulting in less machine downtime and waste.

- The Xtend<sup>3</sup> series is a modular, integrated system for gluing control and quality assurance.
- The advanced development of the globally successful Xtend<sup>2</sup> series consistently goes for simple operation and is geared to the processes involved in print converting and folding-carton production.
- The incorporation of new Baumer hhs components and cameras opens up new fields of application.
- Internal detection of the Baumer hhs components significantly reduces the setup effort.
- An Xtend<sup>3</sup> system comprises a control unit and a 21.5" multi-touch display, together with a host of sensors, cameras and adhesive application heads.
- The control unit can accommodate any desired number of modules, these being networked internally.
- Data Matrix codes, pattern recognition, positioning of labels or correct folding. Xtend<sup>3</sup> checks almost everything that contributes to the quality of your end product.
- Communication with cold-glue pumps and hot-melt melters. All information is centralised.
- Network connection for remote diagnosis.
- Product tracking according to the fail-safe principle.
- Production statistics
- Station allocation with intelligent distributor
- Smart, multi-touch user interface
- Personalised access authorisation
- Full camera integration
- Baumer hhs is the complete provider for all adhesive application and monitoring requirements. One manufacturer for all your components.



Multi-touch technology

**Baumer hhs offers an extensive range of gluing and quality assurance systems.**  
For more information see [www.baumerhhs.com](http://www.baumerhhs.com)