

Xact

hhs
Baumer Group

Precision gluing for all applications
Easy operation, fast setup



Xact



Let's stick together

baumerhhs.com

Precision gluing without any compromises!

Are you interested in shortening setup times, applying glue safely and precisely, and being equipped to meet future demands?

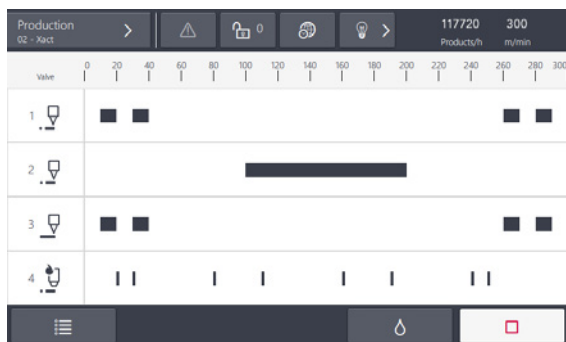
If you are, then the Xact controller is the right solution for you. With the controller's intuitive user interface, you can effortlessly operate up to four application heads. Common to all Baumer hhs controllers, the user interface facilitates setup for machine operators. In the case of repeat orders, setup times can further be optimised by simply retrieving the order from memory.

Perfect application

Xact offers you all the possibilities provided by Baumer hhs's application technology. You can select any type of application head in the system. Whether you are applying cold glue or hot melt, you have direct access to the right solution at all times. All parameters can be set easily and quickly, regardless of whether the process involves dot or line application. Xact ensures uniform glue application across the entire working width, because it adapts adhesive pressure as required.

Your future

Customer and regulatory requirements change constantly. To easily meet both present and future challenges, the systems from Baumer hhs can be flexibly expanded, offering the greatest possible degree of investment protection.



- Controller for four channels
- Simple programming with an intuitive touchscreen interface
- Application pattern with up to eight sub-areas
- Order memory for 99 sample orders
- Proven Baumer hhs dot/line changeover
- Standard operating concept up to and including Xtend³
- Precision adhesive application up to 300 m/min



Technical data

Supply data, electrical

	Value	Unit
Supply voltage, 1 NPE	115 ± 10 %	V _{AC}
	230 ± 10 %	V _{AC}
Frequency, maximum	50/60	Hz
Control voltage, signals	24	V _{DC}
Control voltage, application heads	48	V _{DC}
Current consumption at 115 VAC	3	A
Current consumption at 230 VAC	1,5	A
Fuse	3,15	A
Protection class, mains connection	IP32	–

Dimensions and weight

	Value	Unit
Depth	240	mm
Width	194	mm
Height	135	mm
Weight	4,002	kg

